

**PEOPLE LIVING
WITH HIV/AIDS
VICTORIA
ANNUAL REPORT
2010-2011
VICTORIA'S PEAK
BODY FOR
PEOPLE LIVING
WITH HIV/AIDS
AND AFFECTED
COMMUNITIES
FOR 23 YEARS**



PEOPLE LIVING WITH HIV/AIDS VICTORIA INCORPORATED

Coventry House
Suite 1, 111 Coventry Street,
Southbank, Victoria 3006
Tel: 03 9863 8733
Fax: 03 9863 8734
Email info@plwhavictoria.org.au
www.plwhavictoria.org.au

PHOTOGRAPHY

All images have been used with permission. You must seek permission in writing from PLWHA Victoria before reproducing photographs from this report in any medium. The inclusion of a person's photograph in the report implies nothing about their sexuality or HIV serostatus.

Photographs of the board and staff by Andrew Henshaw.
www.andrewhenshaw.com.au

PUBLICATION DESIGN

The PLWHA Victoria Annual Report 2010-2011 is designed by Ography, a proud supporter of PLWHA Victoria.
www.ography.com.au

Printed by Total Print on Pacesetter Laser. FSC Mix Certified. Produced with ECF pulp. FD&A approved. ISO 14001 Environmental Certification.



CONTENTS

| | |
|---|-----------|
| PRESIDENT'S REPORT | 1 |
| EXECUTIVE OFFICER'S REPORT | 4 |
| TREASURER'S REPORT | 6 |
| WE MUST NEVER FORGET | 7 |
| POSITIVE SPEAKERS BUREAU | 10 |
| HIV AND SEXUAL HEALTH CONNECT LINE | 13 |
| RESOURCES & ACTIVITIES | 14 |
| HEALTH PROMOTION | 16 |
| BOARD AND STAFF | 20 |
| FINANCIAL REPORT 30 JUNE 2011 | 22 |
| THANK YOU | 30 |

OUR VISION

All people with HIV live in dignity and are able to lead valued and meaningful lives as full participants in society.

OUR MISSION

PLWHA Victoria is a community-based organisation that works to advance the human rights and wellbeing of people living with HIV. Our mission is to educate, support and advocate on behalf of all people living with HIV in Victoria, as part of a society-wide response that seeks an end to the HIV epidemic.

PRESIDENT'S REPORT PAUL KIDD

Welcome to the 2010-2011 annual report for People Living with HIV/AIDS Victoria. The past year has been a time of transformation and growth for the agency, and on any measure will be seen as a successful, and memorable, year.

The past 12 months will also be seen as a historic time in the history of the HIV epidemic. Since the first cases of AIDS were reported in the early 1980s, the search has been on for an effective biological prevention method - ideally, a vaccine, but in recent years other avenues of preventing HIV transmission have been explored.

At the beginning of the financial year I was fortunate enough to be in Vienna for the International AIDS Conference where the results of the first positive results from a vaginal HIV microbicide trial were presented, to thunderous applause. Since then, we have seen further advances made in this promising area, with the iPrEx trial showing the effectiveness of pre-exposure prophylaxis and the HPTN 052 trial showing that starting people on HIV treatments could reduce the risk of HIV transmission by a staggering 92 percent.

As we pass the 30th anniversary of the first AIDS diagnoses, it is difficult to overstate the importance of these developments in the fight against HIV. Globally, while great strides have been made in recent years to make HIV treatments available, for every extra person who is put on treatments, three or four new infections occur, making the need for powerful new prevention technologies apparent.

Here in Australia, we continue to benefit from a strong safe sex culture that has contained the local epidemic, but not everyone is able to use condoms all the time, and the arrival of these new technologies has the potential to radically re-energise our HIV prevention efforts.



I don't have any doubt that 2010-2011 will be remembered as a watershed year for HIV prevention, just as 1996 was for HIV treatments.

As these and other technologies get rolled out in coming years, PLWHA Victoria's role will be to educate, inform and represent - the three cornerstones of our mission for the past 23 years. It is in these areas that we seek to excel, and to lead.

Our organisation continues to occupy an esteemed position in the HIV sector, both for the quality and range of programs we offer and the way in which we work.

Programs like the *Phoenix* workshops for newly diagnosed gay and bisexual men, and the *Connected* workshops for friends, partners and family members of those living with HIV make real differences to the lives of positive people and those who support them. Our regular program of Treatment Interactive Events and community forums and the Connect Line and SAM Project all provide vital information

on living with HIV, preventing transmission and staying healthy. And the Positive Speakers Bureau presents a human face of life with HIV, simultaneously educating the audience, combating stigma and building skills and confidence for participants in the program.

I acknowledge the work of our staff and volunteers in continuing to deliver such excellent programs and the collaborative spirit that imbues their work. They are an impressive, well-respected team and each of them is an ornament to the agency.

Almost everything we do we do in partnership with our colleagues from across the HIV sector. The Victorian AIDS Council/Gay Men's Health Centre, Straight Arrows, Positive Women Victoria, Multicultural HIV Support Service, Country Awareness Network and a host of other organisations are our sectoral partners. This broad-based, collaborative partnership is a hallmark of the Victorian response to HIV and we are truly fortunate to have such a well-developed, capable and vigorous civil society response to HIV.

Perhaps the most visible evidence of the strength of these partnerships can be seen in our new offices at Coventry House. Funded under the Department of Health's Strengthening Positive Voices initiative, which aims to bring the three agencies representing people living with HIV into closer working relationships, Coventry House represents the first time our representative organisations have been housed in a purpose-designed space of their own.

While we were saddened by the decision of Positive Women to withdraw from the colocation process in early 2010, we have successfully developed a space where PLWHA Victoria and Straight Arrows are able to collaborate and share resources in a way that benefits all positive people.

Much of the credit for the successes we have rightly belongs to Sonny Williams, whose tenure as Executive Officer has been a period of increasing stability and growth for the agency. Sonny's decision to leave us in July, after more than six years at the

I acknowledge the work of our staff and volunteers in continuing to deliver such excellent programs and the collaborative spirit that imbues their work. They are an impressive, well-respected team and each of them is an ornament to the agency.

helm, was one we received with sadness and appreciation, and while we will miss him, we look forward to new opportunities for collaboration with him as CEO of Positive Life NSW.

Financially, we have again had a solid year, posting a small surplus that will help build up the agency's cash reserves, part of the Board's long-term goal of securing the financial stability of the organisation. Finding savings within already stretched budgets is never easy, but through careful planning and evaluation we are able to continue to deliver excellent programs that represent good value for money for the funder and for positive people.

For the Board, 2010-2011 has been a period for reviewing programs, developing opportunities and laying the foundation for delivery on our Strategic Plan. We have conducted thorough reviews of the Emergency and Distress Fund and Planet Positive, and will be unveiling changes designed to revitalise these programs in the coming year. We have explored opportunities for greater collaboration with the VAC/GMHC and other sectoral partners, including responding rapidly to the reported rise in hepatitis C virus (HCV) notifications among gay men living with HIV. And we continue to work to best-practice governance processes - including a formal Board induction process, professional development for Board members including regular governance training, a Board

performance review program and ongoing succession planning - to ensure the membership gets the best from its volunteer Board, and the Board members find their involvement to be a rewarding and affirming process.

For me as President, the two most significant activities for the year have been the completion of the colocation process, and the recruitment of our new Executive Officer, Jane Hughes. Changes of this magnitude come rarely to organisations like ours, and they represent opportunities to grow and evolve in the way we do the things we do. The coming months and years will see the realisation of those opportunities.

This will be my last annual report as President of PLWHA Victoria. When I became President almost three years ago, I set myself a timetable concluding with the 2011 AGM, and a set of tasks to be achieved in that period, including developing a new strategic plan, reforming governance processes and building the agency's capacity to meet governance challenges. Much of this work is now done or is in train.

I have been humbled and gratified by the support I have received over my time in the role, from the Board, the EO, and the membership. I'd particularly like to acknowledge Sonny Williams, Sam Venning, Paul Baines and David Menadue, and most importantly my wonderful husband Brent Allan, for their

support, advice and forbearance over the past three years.

In closing I would like to pay tribute to the Board, whose perseverance and dedication have been instrumental in the completion of another successful year for PLWHA Victoria, and to Suzy Malhotra, who has stepped adroitly into the role of acting Executive Officer following Sonny's departure, impressive as always with the grace, compassion and energy she brings to her work.



PAUL KIDD

EXECUTIVE OFFICER'S REPORT SONNY WILLIAMS



This last financial year has seen a number of milestone events for PLWHA Victoria, from relocation of the agency to extended funding for some of PLWHA Victoria's suite of positive programs.

Perhaps the most significant event has been entering into a joint leasing arrangement with Straight Arrows for premises and which has been the accumulation of negotiations and agreements between both agencies and the Department of Health. The colocation process brings about the strengthening of the positive voice in Victoria along with a joint health promotion plan identifying areas of commonality, the opportunity to work in collaboration and create a stronger partnership.

One of the programs of the agency to receive continued funding by the Department of Health was the Sexually Adventurous Men's Program; funding has been provided for a further 12 months and provides an opportunity to build on previous work and continue to build relationships within specific communities. Health Promotion received an increase in funding to the Positive Speakers Bureau Rural Road Show; this piece of work within the agency has grown in strength over the last year and it is in no small part to the efforts and contributions of all of the positive speakers.

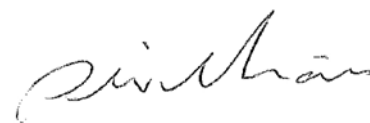
Volunteers are an important resource of any agency and bring valuable life/work experiences to the agency; we are fortunate that we have a strong body of volunteers who offer their time to the agency at many levels. People volunteer for a variety of reasons; to give back to their community of choice, learn new skills, or to extend networks. The range of volunteer skills offered opens up any agency to new experiences, challenges and opportunities to continue adapting and growing its service. Volunteers help us with various projects throughout the year and with specific projects including Planet Positive, our Treatment Interactive Events, Poslink and at festivals. It is important to remember that volunteers become ambassadors for your agency.

Partnerships remain a key component to the work of PLWHA Victoria; it is through these partnerships that the agency is able to raise its profile, to highlight the work, issues and challenges for PLHIV in Victoria. Partnership roles vary - at times you are required to take the lead, at other times a mentoring role, a backup to service or a point of reference.

Throughout this annual report you will read overviews that highlight the depth of work carried out by the agency and demonstrate that this is an essential element of the Victorian response to HIV/AIDS.

PLWHA Victoria is well placed with the HIV Sector in Victoria and reinforces the proposition that HIV positive people remain central to the partnership in participating in HIV/AIDS program delivery in coalition with other organisations. PLWHA Victoria is an appropriate, qualified organisation to deliver a range of services and is in fact uniquely positioned in regard to the provision of these services.

As this is my final report as the Executive Officer for PLWHA Victoria, I wish the community, board and staff the very best in the future.



SONNY WILLIAMS

TREASURER'S REPORT NEIL SHEPHERD

2010-2011 has been an exciting year for PLWHA Victoria. Financially, the organisation continues its upward spiral and mobility. Last year (2009-2010) I was able to report a surplus of \$28,000 and for this year we have a slightly lower surplus of \$18,639.00.

This surplus needs to be put into some context and I note the following:-

- a. administration expenses rose from \$144,225.00 to \$149,837.00 in this financial year,
- b. assets rose from \$349,717.00 to \$418,775.00 in this financial year
- c. retained profits rose from \$58,733.00 to \$77,373.00 in this financial year
- d. the organisation moved from small premises in South Yarra to Southbank in a co-location move with Straight Arrows at no real expense to either organisation, and in the process have up-to-date offices, additional space and newly acquired computer facilities,
- e. PLWHA Victoria has not in any shape or form compromised the services offered to members or the community at large; rather it has continued to expand those services.

INCOME

The income of PLWHA Victoria continues to be mainly funded by the Department of Health. The Department has also been responsible for our move to Southbank and the increased rental payable as a result. We continue to gain support and income from pharmaceutical companies and partnership programs with interstate entities and specified donations from the community, and the organisation is continually seeking out additional income.

Total income received for the financial year was \$959,019.00 (up from \$792,646.00 in the previous year) but much of this increased income has been the cost of re-location, rental and cleaning expenses.

EXPENDITURE

The organisational and employee related expenses have increased in line with the increased delivery of the various programs.

- a. some expenditure costs have been lowered for certain programs, but delivery of those program has not been compromised
- b. there has been a constant review of budgets and account keeping processes by the Executive Officer, the bookkeeper and myself as Treasurer and the provision of regular reports to the PLWHA Victoria Board on the financial wellbeing of the organisation.

Lastly, I wish to acknowledge some important contributions made to the 2010-2011 financial figures; to Sonny Williams, our outgoing Executive Officer, who has played a significant role in the financial wellbeing of our organisation; to the staff of PLWHA Victoria for the dedication they constantly display in the day-to-day operations and in promoting the programs undertaken by PLWHA Victoria; to Akke our Bookkeeper for all her hard work; and lastly to our auditors Clements, Dunne and Bell, who have provided an extremely thorough and detailed audit service.

IN SUMMARY

| | |
|------------------------------|--------------|
| Current Total assets | \$418,775.00 |
| Non-Current assets | \$23,832.00 |
| Current total liabilities | \$364,235.00 |
| Net Assets of PLWHA Victoria | \$77,372.00 |

WE MUST NEVER FORGET DAVID MENADUE

As the tenth memorial service for the people who died in the 9/11 attack in New York city took place, it occurred to me that the grief that many of the loved ones revealed in TV specials on the event, was something that a lot of us have experienced as a part of the HIV crisis.

Of course the situations are vastly different. The shock of terror attacks on American soil was a devastating and unexpected blow to the US, both to its pride and sense of security. The amazing footage of two planes being forcibly crashed into the World Trade Centre will be seared in the psyche of people around the world for many years to come.

The advent of HIV, first discovered by scientists some thirty years ago now, did not have the immediate impact of the 9/11 attack - it was something that slowly built in its horror and its meaning to people around the world, as the full impact of this unusual retrovirus was to become apparent.

With some 29 million deaths and a global population of 33 million infected, HIV/AIDS has become one of the biggest epidemics of recent times, and certainly one of the deadliest. In Australia we have experienced close to 7000 deaths and have an estimated 22 000 living with the virus. While arguably, the 9/11 experience in the US may have a more profound effect on world history - it started two wars against terror, for starters - the toll from HIV is not even comparable, such has

been the devastating effect it has had on so many lives, so many families, so many communities around the world.

As the TV specials around that September 2001 attack played on our screens, I shed tears for the families of the people who were killed, particularly for the children who have missed the comfort of a mother or father for the past ten years. And I remembered what the late eighties and the nineties were like for me when grief and sorrow were such a dominant part of my daily life.

When I was diagnosed in 1984 (not long after the test was made available) so little was known about the virus, how it was contracted or what the prognosis would be, that many of us were not quite sure whether to be alarmed or not. Would it be like Hepatitis B, where someone could develop antibodies and not go on to be infected with the virus? Would everyone be affected in the same way or would some survive against the odds?

As the eighties unfolded though and the media developed their sensational story angles around HIV - stories about innocent

babies being infected by blood transfusions from gay men who didn't know they were HIV-positive, or politicians asking for us to be quarantined on French Island to protect the population – the stigmatising effect of living with the virus became too much for a few of us living in Melbourne. We set up our own peer support group, called *Melbourne Positive Friends*, to meet in each others homes to try to give each other the strength to cope with what seemed to be an increasingly hostile society.

We created our own confidential space with strict rules about who could come (HIV-positive people only) and protections against breaches of confidentiality (immediate expulsion from the group). Such was the stigma and the fear of retribution if others found out, it all had to be super-secretive if the group was to maintain people's trust and confidence.

This was the same situation in society in general. Few deaths from AIDS were publicly reported (at least for their cause) as relatives and friends tried to avoid the stigma of being seen to be associated with the 'new plague',

as some media were calling it. When the AIDS Council was established, wonderful support was given to people with HIV who were dying from AIDS but there were few individuals who were prepared to identify as HIV-positive in public.

It was to take several years until some enlightened HIV-positive people (many no longer with us) like Keith Harbour, Les Taylor and Chris Carter (early Convenors of PLWHA Victoria) saw the need for HIV-positive people to have their own voice, both within the HIV sector and in society at large. PLWHA Victoria grew out of a meeting of mainly HIV-positive people at St Martin's Theatre in South Yarra in 1988. The organisation at first became a program of the Victorian AIDS Council/Gay Men's Health Centre and I was Convenor from 1989 to 1993.

The major achievements of the program in those days were to open the Positive Living Centre in St Kilda in 1993 (after a long battle to find a site where a Council would give us a permit to open—without opposition from local residents), giving a media presence and

There is confidence within government of the essential role the organisation plays in representing the views of HIV-positive people to government, the community sector and to society at large.

visibility to people with HIV (helping to provide a human face to the epidemic) and getting the principle of representation of HIV-positive people at all levels of decision-making (including on government Ministerial Advisory Committees on AIDS) accepted as best practice.

The years of the late eighties and early nineties, when there were no effective treatments, were a terrible time for all of us living with or affected by HIV. So many people in our friendship networks were becoming ill and dying and there seemed little hope of a respite from hospital visits and funerals. The grief that everyone felt was probably compounded for HIV-positive people because we were always wondering if we would be next.

Those of us who were lucky enough to make it to 1995 were able to reap the benefits of the new protease inhibitor class of antiretrovirals - and many of us undoubtedly owe our survival to that critical development in HIV treatments.

The mood was also right for PLWHA Victoria to become an independent organisation separate from VAC/GMHC, to develop its own constitution and receive its own funding from government. The first President of the new organisation, John Daye and Executive Officer Bridget Haire did fundamental work in setting up the way the organisation was to operate

into the future and to build its reputation as an effective advocate for HIV-positive people.

The newly independent PLWHA Victoria began in 1998. Its achievements since have been numerous, including advocacy to ensure there were no co-payments at Melbourne Sexual Health Centre, working with the Alfred Hospital to set up Fairfield House and other services, helping to get the service Dental Plus established for people with HIV, providing cutting edge information on treatments and health maintenance and contributing to policy development on many HIV-related issues with partners such as VAC/GMHC, Straight Arrows and PositiveWomen.

In recent times, when the health of many HIV-positive people is much improved we have received funds for health promotion work to help people maintain their health, to limit the effects of HIV and ageing, and avoid transmission of the virus through acquisition of STIs.

Perhaps one of the grandest recent achievements and the most tangible sign of PLWHA Victoria's continuing growth and reputation with government and our partners has been the provision of funding for a new building for the organisation in Southbank. There is confidence within government of the essential role the organisation plays in representing the views

of HIV-positive people to government, the community sector and to society at large.

For all this, I do hope that, as the organisation looks to the future, we will always remember our past. We should remember those brave people with HIV who stood up and declared their status, helped create our organisation and made life that much better for people living the virus all these years afterwards. We should also think of those friends who died, regardless of their contribution to the cause, because every one of these people must always count—to their families, their friends, their workmates and to our organisation. It was their fight that led to PLWHA Victoria being established to work to improve the lives of people with HIV.

As a sign at the World Trade Centre memorial said, 'We Must Never Forget.'

POSITIVE SPEAKERS BUREAU

“It is very different reading about HIV and listening from people with HIV. Books do not transfer emotions as well as real people speaking.”

SPEAKING ENGAGEMENTS

In 2010-2011 the Bureau delivered 267 individual talks to an audience of 8998 people – this is a massive increase over previous years. 150 talks were by male speakers and 117 by female speakers; 104 dual presentations and 59 single talks were delivered. Of particular note was the increase in rural school audiences to 4825 students where we delivered 49 dual presentations. In March 2011 our audiences totalled a huge 1706 people.

It is of concern that some female speakers have resigned or have additional commitments. This means that we are unable to provide equal gender representations for some of our requests and a heavier burden has fallen on the few female speakers we have left.

Speakers continue to inspire audiences for their outstanding commitment to be out there in

the community discussing HIV & sexual health. Evaluations remain at the higher end of the rating scales and one of the more common comments is from teachers who are amazed that our speakers keep their students engaged for the whole time whereas the teachers struggle to do the same!

MONASH UNIVERSITY EVALUATION PROJECT

In 2010 Laura Delaney volunteered her time to research the effect of our speakers on Monash University 1st year medical students. Eric Glare developed the evaluation forms and data spread sheet. Laura did an excellent job with data analysis software used for files, data entry, frequency tables and descriptive statistics. To have the data validate the effectiveness of our speakers was an extraordinary achievement and takes us to greater level of professionalism. The data showed PLHIV stakeholder presentations performed a crucial

role in developing the skills and understanding of medical students about the disease complexity of HIV. Students were able to incorporate textbook studies into reality. For the first time we now have qualitative and quantitative research we can use for conference abstracts and advocate for the inclusion of our speakers in other programs and agencies.

PSB HIV & SEXUAL HEALTH RURAL PROJECT

The three year funding from the Department of Health to the PSB to deliver a rural project has been an outstanding success. A comprehensive evaluation report was completed for the Department in December 2010. We continue to build on schools' response rates and audience numbers each year.

Since the project is free for rural schools, it comes as no surprise that we have a strong uptake. Many schools have very low health budgets and

our programs fit perfectly into their overall whole-of-school sexuality curriculum. Secondary school nurses continue to rate very well the effectiveness of our speakers to engage students in discussion about sexual health and wellbeing.

2010 INTERNATIONAL AIDS CONFERENCE - VIENNA

Max submitted an abstract for the International Conference and was one of 6000 accepted posters. The highly visual and informative poster entitled 'Scaling up the GIPA Pyramid' attracted a lot of interest in the Positive Speakers Bureau and promoted the program as extremely professional and dynamic.

Areas of particular interest at the conference included:

1. Global Network PLHIV Plus (GNP+) - satellite and mainstream conferences with a focus on GIPA.
2. Community leadership and accountability streams.
3. Plenary sessions: Advancements in ARV - treatment = prevention; Early treatment intervention as gold standard; Global Village activities and networking.

4. Workshops: Scaling up key programs to protect human rights; Positive people speaking in public.
5. Sessions: Malignancies in PLHIV; Human Rights; HIV and Ageing; Global epidemics among MSM; Community advocating for change; Regional sessions on Asia and the Pacific; HIV and Criminalisation.

CLOSER DVD

The DVD continues to be requested by a diverse group of organisations and individuals. It is used for counselling services and has been distributed to all Victorian rural schools where our speakers have presented. 600 copies have been distributed and another 200 have been ordered. Our website hits for several of our DVD speakers continue to be a highlight of monthly website reports. We distributed 50 copies at the Vienna AIDS Conference and 20 in Papua New Guinea. The requests have come from a variety of organisations including Australian AIDS Councils and PLHIV organisations, hospitals, HIV medical clinics, Victorian universities, Women's Clinic at Lavarack Barracks in Townsville,

Department of Psychology, University of Otago, New Zealand, NSW STI Program, Sydney Hospital, Victorian Aboriginal Health Service, Hanover Young Adult Services and Marie Stopes Australia.

SPEAKER TRAINING

The Bureau continues to recruit trainee speakers and their professional and personal development is crucial to our ongoing success with a new generation of speakers moving up the ranks as they develop competency. The PSB training calendar reflects the needs of speakers to continuously update their skills. Of note this year has been the participation of some PLWHA Victoria board members in training workshops. We continue to seek innovative professional development for the speakers. We also train and support the speakers from Hepatitis C Victoria who benefit from developing new skills and peer support through our program. We now have speakers living with both HIV and HCV to represent the challenges they face living with one or both blood borne virus groups.

“This presentation really added a human aspect to my understanding to HIV/AIDS. In spite of having studied the condition in a sociological context, to hear from those living with HIV de-medicalised the condition and I felt very humbled to have been made privy to such an experience.”



“It opened my eyes to risk. Makes you see how real these things are. Behaviour changing presentation!”

WORLD AIDS DAY AT VICTORIAN PARLIAMENT

For the sixth year, PLWHA Victoria and the Positive Speakers Bureau launched World AIDS Day (WAD) in the Victorian Parliament Gardens in front of more than 100 people. As the Government was in election caretaker mode, Jim Hyde, Director of Prevention and Population at the Department of Health, officially launched the day with a reflection on the early days of the epidemic to the present. The WAD theme was *Take Action - No Discrimination*. Powerful speeches by PSB speakers Phil Quirk and Michelle Wesley articulated the impact of an HIV diagnosis, stigma and discrimination. Morning tea was held after the launch. Guests enjoyed the opportunity to meet others and a time to remember all those who have lost their lives to AIDS and those who are living with HIV.

POSITIVE SPEAKERS BUREAU SPONSORSHIP FOR 2010-11

The Bureau is fortunate to attract unrestricted sponsorship from pharmaceutical companies. This sponsorship enhances the ability to be able to sponsor talks to the many schools and NGOs who do not have the budget to pay for our speakers. \$5000 in sponsorship allows us to provide 50 additional talks. It substantially increases the amount of talks and training that we do each year with our speakers. It also allows us to develop new and innovative ways of promoting the Bureau's speakers as community educators. Speakers who have completed their training as volunteers are paid for their speaking engagements. Our sponsors recognise the importance of speaker honorariums for the expertise our speakers bring to the presentations we provide in the community. We sincerely thank the companies who have made this possible through their enduring support.

HIV AND SEXUAL HEALTH CONNECT LINE

The HIV and Sexual Health Connect line (Connect Line) is a confidential and anonymous service that provides information and support through referral about sexual health issues including HIV for all Victorians. Callers can access the service Monday to Friday between the hours of 10am through until 6pm (excluding public holidays). A website operates so people can still access information about relevant sexual health issues outside of these hours. If people wish to access the service outside of operating hours they are able to leave a message and this will be responded to at the beginning of the next hours of operation or submit a question through the website.

During the last financial year 1180 callers attempted to connect the service. 880 callers were able to make contact with the service during operating hours. Due to the broad scope of the service, callers are generally not from a demographic with which PLWHA Victoria is commonly in contact. Callers are more often than not men who have been born in Australia, who are not living with HIV and identify

as heterosexual; most commonly contacting the service due to an incident which has highlighted a sexual health issue on which they require more information about; and in a majority of instances, a referral through to an appropriate service. The majority of callers identify online directories as where they became aware of the service.

Given the broad scope of callers, the Connect Line has been promoted at a number of festivals and events during 2010/2011, including Midsumma, Chillout, the Lunar Festival, *Where the Heart Is* (homelessness festival) and Big Day Out. We have also recently established a presence at Monash University's Orientation Week and distributed hundreds of resources to a large group of mostly international students. As the HIV & Sexual Health Connect Line is a confidential and anonymous service, young people, people from culturally and linguistically diverse communities and other groups who may be reluctant to talk about issues relating to their sexual health can discuss their concerns confident that their privacy will be respected.

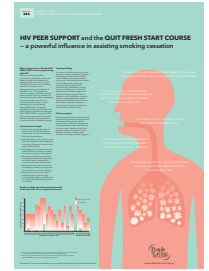
Internally, there has been a change of staff which has seen new staff trained on the provision of services and new measures put in place to ensure callers receive the best possible information and referrals. Ongoing training and capacity development happens on a bi-monthly basis to extend existing staff knowledge of issues relevant to the provision of service and new and emerging issues that are noted from the information which is retained from the call, in particular the nature or reason they contacted the service.

The HIV and Sexual Health Connect Line operates from 10am to 6pm, Monday to Friday

**TELEPHONE 1800 038 125
WWW.CONNECTLINE.COM.AU**

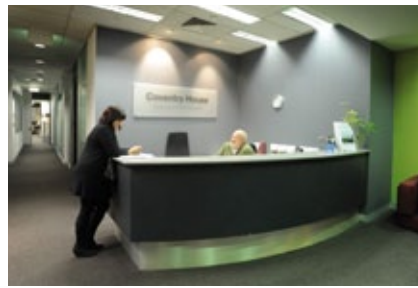
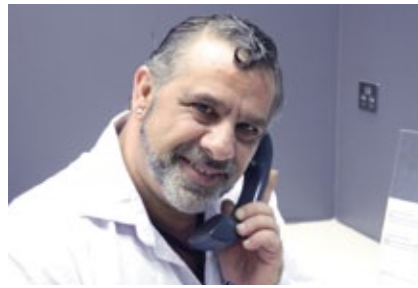
RESOURCES & ACTIVITIES





SCALING UP THE GIPA PYRAMID
The empowerment of PLHIV speakers towards social change leadership - an Australian perspective

| Level | Description |
|---------------------------|-------------|
| Level 1: GIPA PRINCIPLE | ... |
| Level 2: SOCIAL CHANGE | ... |
| Level 3: PLHIV SPEAKERS | ... |
| Level 4: PLHIV LEADERSHIP | ... |
| Level 5: HIV STIGMA | ... |



"Getting on with it" - Tips for living longer with HIV.

PLWHA Victoria would like to invite you to a complimentary dinner forum to discuss tips for living longer with HIV.

Tuesday 1 February 2011
Time: 6.30pm

Guest Speakers:
Dr Norm Roth
Ross Duffin
Jenny McDonald

RSVP: Friday 21 January 2011

Please call 9865 6772 to RSVP or for further information.



HEALTH PROMOTION

Health Promotion continues to be an important part of the work that PLWHA Victoria undertakes for people living with HIV. We do this by delivering programs that provide the opportunity for capacity building and improving health literacy with the aim of providing independence to our members to determine and influence their own health outcomes.

PHOENIX WORKSHOP

The Phoenix workshop has been a significant and empowering first step for many people who have been newly diagnosed with HIV. At a loss of what to do and who to talk to, participants come together to share their experiences with the view of validating what they are going through. In this environment they are also able to gain information from peer educators and other health professionals including doctors and counsellors. The workshop continues to evaluate well, showing how much a difference it makes in the management of HIV for those who are newly diagnosed.

The six month follow up sessions continue to show the overall value of the program in terms of longer term outcomes. These sessions provide an opportunity for participants to come together to explore and reflect on the strategies that they have adopted to deal with their diagnoses.

Partnerships remain an important part of Phoenix, with the ongoing engagement of the HIV Peer Support Group Facilitators (VAC/GMHC), doctors from the Centre Clinic, counsellors from VAC/GMHC's Counselling Services Program and sexual health nurses from the Melbourne Sexual Health Centre to deliver specialist expert information. In the past year, the Phoenix workshop has also played a key role in supporting and encouraging participation in research e.g. in the Kirby Institute's *Sero-conversion Study - A survey for people who have been recently been diagnosed with HIV.*

"Thank you, your group and support was AMAZING."

"We got the chance to unload our experiences and feel more relaxed about our "crisis""

QUIT FRESH START PROGRAM

Research has consistently shown smoking as having an independent association with an increased risk of cardiovascular disease and that it can have a detrimental impact on body organs and bones. The Australian Research Centre in Sex, Health & Society's HIV Futures Survey (2010) shows that over 40% per cent of PLHIV identify as smokers - more than twice the general population. Smoking cessation is one of the most important health prevention strategies people with HIV can do to reduce the incidence or impact of other health conditions associated with long-term HAART (e.g. heart disease, strokes, cancer). In partnership with QUIT Victoria (a program of the Anti Cancer Council of Victoria), PLWHA Victoria addresses this significant issue by continuing to deliver the QUIT Fresh Start course for all people living with HIV. Evaluation of this program has also shown that the element of a peer group support environment appears to significantly increase the chances of success.

OPPOSITES ATTRACT WORKSHOP

PLWHA Victoria recognises that the mental and physical wellbeing of people living with HIV can be enhanced by maintaining successful relationships. This includes relationships of differing HIV status. PLWHA Victoria and VAC/GMHC hosted the second successful Opposites Attract

workshop earlier this year where couples met to hear information and share their experiences in a safe space. It also provided an opportunity for HIV negative partners to build capacity in supporting their HIV positive partner.

PEER SUPPORT

This significant area of our work involves the delivery of information, advice and support on a range of issues including health and well-being, treatments, travel, legal issues, health/life insurance and immigration while providing an opportunity to speak to someone as a peer with the shared experience of living with HIV.

Much of this work is conducted at weekly outreach sessions at the Positive Living Centre (PLC) of VAC/GMHC. The regular presence of PLWHA Victoria at the community drop-in space of the PLC has been invaluable and gives our constituency direct contact to our organisation while also providing face-to-face peer support.

POSLINK

Our bi-monthly magazine Poslink continues to reach a wide audience with over 12,000 copies distributed to our members and associated members via direct mail-out, email, community forums, events, sexual health clinics, key HIV hospitals and through our partner organisations including the Multicultural Health and Support Service and the Alfred Education and Resource

Centre. We would like to take the opportunity to thank our regular contributors David Menadue, James May, Positive Women and Straight Arrows for their continued support and passion to inform and educate. Poslink has attracted several new contributors this year and received an increasing demand from the non-HIV sector for advertising space and article submissions. With an average of 105 hits on the plwhavictoria.org.au website a month and email requires, Poslink continues to be a great communication tool providing a voice for the positive community.

FESTIVALS AND EVENTS

PLWHA Victoria's mission to reduce stigma and discrimination within the wider community and to educate about the issues of people living with HIV is reflected in the range of events and festivals we attend. This year we promoted the organisation at nine rural and metropolitan festivals such as Daylesford ChillOut Festival, the Big Day Out, Beechworth Spring Migration Festival, Lunar Festival and our regular event Midsumma Carnival.

A new event in the health promotion calendar included the *Where the Heart is* community festival. Partnering with the Royal District Nursing Service, we joined several other organisations for a day in the gardens for people who are homeless or at risk of homelessness in Melbourne. Our stall distributed over 300 safe sex packs as well as hand-held fans and HIV and sexual health information.

Our key message for 2010-2011 was *Positive Equality*, i.e. that all people living with HIV in Victoria should have equal rights, free from stigma and discrimination.

Throughout the year our staff and volunteers engaged with thousands of people and distributed over 6000 safe sex packs and resources promoting the HIV & Sexual Health Connect Line, 1000 *Positive Equality* coffee mugs, 2500 hand-held fans plus educational resources such as Poslink.

HEALTH INFORMATION FACTSHEETS

This year has seen the production of the Health Information Factsheets, which have been adapted from Positive Life NSW's Health Promotion Factsheets. With a team of HIV and sexual health experts on our Resource Development Reference Group, HIV & Cancer, HIV & Hep C as well as the HIV & Oral Health factsheets have all been released as web-based resources for our members.

PLANET POSITIVE

Planet Positive, a social event for positive people and their families and friends, continues to offer a great afternoon to our members. This event aims to reduce isolation and enhance the social networks of people living with HIV. In the past year, we have seen a significant rise in the number of people attending Planet Positive (80-100 people per event) and this has been made possible in no small part to the combined

efforts of PLWHA Victoria, Straight Arrows, Positive Women and VAC/GMHC to promote and host the event. The chosen venue of DTs Hotel in Richmond to hold the event has also no doubt played an important role in encouraging a high attendance by providing a safe, friendly and homely environment with a great BBQ!

WEBSITE

Averaging over 650 visits a month, the plwhavictoria.org.au website provides the community with information about up and coming events, access to HIV resources and keeps our members informed about the future direction and goals via our strategic plan and previous annual reports. The top pages visited by users on the site include the *Positive Speakers Bureau*, *Meet our Speakers Videos* and *Living with HIV Resources*.

HIV & AGEING FORUM

In February 2011 PLWHA Victoria hosted a community forum, *Getting on with it - Tips for living longer with HIV*. The forum was in response to the latest research surrounding HIV & ageing and about gaining greater understanding of the long term effects on HIV on the body. Guest speakers included Dr Norm Roth from Prahran Market Clinic, Ross Duffin (AFAO and consultant) and Specialist Dietician Jenny McDonald.

CHRISTMAS HAMPERS

2010 marked the 11th year of the Christmas Hamper Appeal. What might have started as a

one-person job has evolved into a dynamic team of staff, volunteers, corporate sponsors and community organisations working together to create a special occasion for PLHIV who spend Christmas Day in hospital or at home without family or social support. 57 hampers full of luxury items were distributed this year via the care and support team at the PLC and our dedicated volunteers who set aside their Christmas morning to visit those in hospital. Sircuit Bar once again held the *Adopt-A-Bear* Auction and the *Give* dance party to raise funds and gifts to fill the hampers this year. Once again we thank them and every one of our sponsors for their ongoing commitment and support to this program.

VOLUNTEERS

Volunteers continue to be an incredible asset to the PLWHA Victoria team's ability to support and provide information to the positive community. Roles of our volunteers include mail-outs, Poslink distribution, assisting with festival and event arrangements as well as engaging with festival patrons at our stalls, administration duties, writing for Poslink and supporting staff in their day-to-day-roles. The relocation to Coventry House will bring a greater capacity in 2011-2012 for recruitment of volunteers and to offer formal training for existing PLHIV volunteers to increase their skills and knowledge to assist with a possible transition back into the workforce. PLWHA Victoria values

our volunteers and looks forward to 2011-2012 where we can provide greater opportunities and support at Coventry House for all our volunteers.

THE SEXUALLY ADVENTUROUS MEN (SAM) PROJECT

The Sexually Adventurous Men (SAM) project is a joint venture between the Victorian AIDS Council/Gay Men's Health Centre (VAC/GMHC), People Living With HIV/AIDS (PLWHA) Victoria and the Australian Research Centre in Sex, Health and Society (ARCSHS). The project was commissioned in response to research that has highlighted an increased risk of HIV and STI transmission amongst men in sexually adventurous networks.

The project provides an in depth perspective into the lived context of the sexually adventurous subculture. The information ascertained through this project allows the collaborators to be uniquely positioned when framing and developing effective and relevant health promotion initiatives, resources and materials aimed at reducing transmission rates. A large emphasis is placed upon community engagement, relationship development and capacity building strategies.

The project started as a pilot program in 2009/2010 and after a brief hiatus pending further funding, resumed in mid-2011. Since the project commenced, it has been a high priority to establish, maintain and optimise strategic alliances with party/

event organisers & venue owners, organised social groups and the general SAM community.

From its inception, the principal aim of the project has been to facilitate involvement from the SAM community so that suggestions, feedback and direct involvement in the development of sexual health initiatives are a result of community development. The SAM project workers actively seek opportunities to work with SAM in new initiatives. For example, the posters depicting sexual health messages designed for Southern Hibernation in collaboration with VicBears and the posters created and produced with Beyond for their parties were all conceived by the project workers.

We have increased communication between venue owners, party organisers and key stakeholders, providing them with the opportunity to make suggestions, submit feedback and take partial ownership of sexual health initiatives.

The SAM workers have produced resources based on feedback from the SAM community and as a means of engaging with the target audience more effectively. A number of giveaways have been distributed at dance parties and other regular events such as BootClub, Megafist, Code Black, Southern Hibernation etc. Major projects for next year include the development of a new website 'Down and Dirty' and a video with personal narratives from members of the community.

REPRESENTATION

In 2020/2011, the Health Promotion Team continued to be represented on a variety of national and state based reference groups and committees. Our participation contributes to the development of models of good practice based upon consultation and consensus, and ensures that policies, services and resources stay relevant to our constituency in an ever changing environment. These groups and committees include:

- Treatment Officers Network (NAPWA)
- Positive Living Magazine Reference Group (NAPWA)
- Interagency World AIDS Day Working Group (cross HIV related agencies)
- BBV/STI Multicultural Working Group (cross culturally and linguistically diverse (CALD) service providers)
- HIV Interagency Group (cross HIV agencies)
- 'Top Tips' - Resource Development and Implementation Group (AFAO/NAPWA)
- 'HIV Tests and Treatments' - Resource Development and Implementation Group (AFAO/NAPWA)
- Advisory Group - Sexually Adventurous Men Program (VAC/GMHC, ARCSHS)
- Resource Development Reference Group (VAC/GMHC, Positive Women, Straight Arrows, Multicultural Health and Support Service, the Alfred).

BOARD AND STAFF

PRESIDENT

Paul Kidd

VICE PRESIDENT

Sam Venning

TREASURER

Neil Shepherd

SECRETARY

Ben Riethmuller

BOARD MEMBERS

Leighton Browne

Suzanne Lau-Gooey

Russell Varney

Jeffrey Robertson

Michael Casley (*appointed Oct 2010*)

David Tonkin (*resigned Jan 2011*)

Shane Boyd (*appointed June 2010*)

Bruce Fitzgerald, Straight Arrows Representative
(*appointed Sep 2010, resigned Dec 2010*)

Stephanie Raper, Positive Women Representative (*resigned Dec 2010*)

Michelle Wesley, Positive Women Representative (*April - June 2010*)



Our organisation continues to occupy an esteemed position in the HIV sector, both for the quality and range of programs we offer and the way in which we work.

EXECUTIVE OFFICER

Sonny Williams

HEALTH PROMOTION MANAGER

Suzy Malhotra

ADMINISTRATOR

David Westlake

FINANCE OFFICER

Akke Halma

SPEAKERS BUREAU COORDINATOR

Max Niggli

HEALTH PROMOTION OFFICER (COMMUNICATION & RESOURCES)

Shannen Myers

HEALTH PROMOTION OFFICER

Vic Perri

HEALTH PROMOTION OFFICER (SAM PROJECT)

Wolf Graf

CONNECT PHONELINE COORDINATOR

Guy Hussey



FINANCIAL REPORT 30 JUNE 2011

BOARD OF MANAGEMENT REPORT

Your Board of Management submits the financial report of People Living with HIV/AIDS Victoria Inc. for the financial year ended 30 June 2011.

BOARD OF MANAGEMENT

The names of Board of Management members throughout the year and at the date of this report are:

Paul Kidd, David Tonkin res Jan 2011, Stephanie Raper res Dec 2010, Suzanne Lau Gooley, Russell Varney, Sam Venning, Jeffery Robertson, Leighton Browne, Neil Shepherd, Bruce Fitzgerald appt Sept 2010 res Dec 2010, Ben Reithmuller appt Oct 2010, Michael Casley appt Oct 2010, Shane Boyd appt June 2011 and Michelle Wesley appt Apr 2010 re June 2010.

INCORPORATION

The association was incorporated in Victoria on 7th December 1999.

PRINCIPAL ACTIVITIES

The principal activities of the association during the financial year was to provide services and relief from suffering, alleviating poverty, distress and financial hardship, for people living with HIV/AIDS, with the aim of improving their life expectancy and also their quality of life.

SIGNIFICANT CHANGES

No significant change in the nature of these activities occurred during the year.

OPERATING RESULT

The operating result for the year was a profit of \$18,639 (2010: \$29,916) and no provision for income tax was required as the Association is exempt from income tax.

Signed in accordance with a resolution of the Board of Management.



SAM VENNING
Acting President



NEIL SHEPHERD
Treasurer

Southbank, 15 September 2011

**STATEMENT BY THE BOARD OF MANAGEMENT
FOR THE YEAR ENDED 30 JUNE 2011**

The Board of Management has determined that the association is not a reporting entity and that this special purpose financial report should be prepared in accordance with the accounting policies outlined in Note 1 to the financial statements.

In the opinion of the Board of Management the financial report as set out on pages 1 to 10:

- a. Presents a true and fair view of the financial position of People Living with HIV/AIDS Victoria Inc. as at 30 June 2011 and its performance for the year ended on that date.
- b. At the date of this statement, there are reasonable grounds to believe that People Living with HIV/AIDS Victoria Inc. will be able to pay its debts as and when they fall due.

This statement is made in accordance with a resolution of the Board of Management and is signed for and on behalf of the Board of Management by:



SAM VENNING
Acting President



NEIL SHEPHERD
Treasurer

Southbank, 15 September 2011

INCOME AND EXPENDITURE STATEMENT FOR THE YEAR ENDED 30 JUNE 2011

| | NOTE | 2011 \$ | 2010 \$ |
|---|--------|----------------|----------------|
| INCOME | | | |
| Donations | | - | 1,050 |
| Emergency Distress Fund | | 1,866 | 3,200 |
| Grants Received | 1(a) | 872,259 | 733,063 |
| Interest Received | 2 | 598 | 493 |
| Other Income | | 54 | - |
| Speakers Bureau Income | | 56,224 | 34,841 |
| Sponsorship | | 28,018 | 19,999 |
| | | 959,019 | 792,646 |
| LESS: EXPENDITURE | | | |
| Administration Salaries and Superannuation | | 149,837 | 144,225 |
| Administration | | 69,521 | 68,865 |
| Board Expenses | | 13,561 | 10,086 |
| Campaigns | | 90,392 | 49,950 |
| Conferences | | 25,653 | 26,701 |
| Depreciation | 2 | 48,432 | 8,485 |
| Employment Expenses | | 12,113 | 6,540 |
| Entitlements and Provisions | | 15,094 | 16,705 |
| Grants | | 4,400 | 4,400 |
| Health Promotion | | 103,305 | 92,190 |
| Health Promotion / Positive Education | | 42,373 | 43,724 |
| Information Line | | 76,877 | 84,973 |
| Poslink | | 17,767 | 22,735 |
| Publications/Marketing/Promotions | | 2,156 | 2,549 |
| Rent and On - Costs | | 150,452 | - |
| Speakers Bureau | | 100,843 | 90,047 |
| Sexual Adventurism | | 17,604 | 90,555 |
| | | 940,380 | 762,730 |
| Profit / (loss) before income tax | | 18,639 | 29,916 |
| Income tax expense | 1(d)/2 | - | - |
| Profit / (loss) after income tax | | 18,639 | 29,916 |
| Retained profits at the beginning of the financial year | | 58,733 | 28,817 |
| Retained profits at the end of the financial year | | 77,372 | 58,733 |

The accompanying notes form part of this financial report.

ASSETS AND LIABILITIES STATEMENT AS AT 30 JUNE 2011

| | NOTE | 2011 \$ | 2010 \$ |
|----------------------------------|------|----------------|----------------|
| CURRENT ASSETS | | | |
| Cash and Cash Equivalents | 3 | 357,902 | 323,723 |
| Trade and Other Receivables | 4 | 60,873 | 25,994 |
| Total Current Assets | | 418,775 | 349,717 |
| NON-CURRENT ASSETS | | | |
| Plant and equipment | 5 | 23,832 | 10,674 |
| total non-current assets | | 23,832 | 10,674 |
| Total Assets | | 442,607 | 360,391 |
| CURRENT LIABILITIES | | | |
| Trade and Other Payables | 6 | 276,374 | 223,156 |
| Provisions | 7 | 88,861 | 78,502 |
| Total Current Liabilities | | 365,235 | 301,658 |
| Total Liabilities | | 365,235 | 301,658 |
| Net Assets | | 77,372 | 58,733 |
| MEMBERS' FUNDS | | | |
| Retained Profits | | 77,372 | 58,733 |
| Total Members' Funds | | 77,372 | 58,733 |

The accompanying notes form part of this financial report.

STATEMENT OF CASH FLOWS FOR THE YEAR ENDED 30 JUNE 2011

| CASH FLOWS FROM OPERATING ACTIVITIES | NOTE | 2011 \$ | 2010 \$ |
|--|----------|-----------------|------------------|
| Receipts from sponsors, members, donations and fundraising | | 85,990 | 131,759 |
| Operating grant receipts | | 867,352 | 535,718 |
| Interest received | | 598 | 493 |
| Payments to suppliers and employees | | (858,171) | (759,994) |
| Net cash provided by/(used in) operating activities | B | 95,769 | (92,024) |
| CASH FLOWS FROM INVESTING ACTIVITIES | | | |
| Purchases of plant and equipment | | (61,590) | (9,720) |
| Net cash (used in) investing activities | | (61,590) | (9,720) |
| Cash flows from Financing Activities | | - | - |
| Net increase / (decrease) in cash held | | 34,179 | (101,744) |
| Cash at the beginning of the financial year | | 323,723 | 425,467 |
| Cash at the end of the financial year | A | 357,902 | 323,723 |

The accompanying notes form part of this financial report.

CASH FLOW STATEMENT FOR THE YEAR ENDED 30 JUNE 2011

| NOTE A RECONCILIATION OF CASH | NOTE | 2011 \$ | 2010 \$ |
|---|---------------|----------------|-----------------|
| For the purposes of the cash flow statement, cash includes cash on hand and in banks and investments in money markets. Cash at the end of the financial year is shown in the cash flow statement reconciled to the related items in the balance sheet as follows: | | | |
| Cash and Cash Equivalents | Note 3 | 357,902 | 323,723 |
| NOTE B RECONCILIATION OF NET CASH PROVIDED BY / (USED IN) OPERATING ACTIVITIES TO PROFIT / (LOSS) AFTER INCOME TAX | | | |
| Profit / (loss) after income tax | | 18,639 | 29,916 |
| Non-cash flows in profit / (loss) after income tax: | | | |
| Depreciation | | 48,432 | 8,485 |
| Changes in Assets and Liabilities: | | | |
| (Increase) / decrease in trade and other receivables | | (34,879) | 3,393 |
| Increase / (decrease) in provisions | | 10,359 | 16,706 |
| Increase / (decrease) in trade and other payables | | 53,218 | (150,524) |
| Net cash provided by/(used in) operating activities | | 95,769 | (92,024) |

The association has no credit stand-by or financing facilities in place.

There were no non-cash financing or investing activities during the period.

NOTES TO THE FINANCIAL STATEMENTS FOR THE YEAR ENDED 30 JUNE 2011

1. SUMMARY OF SIGNIFICANT ACCOUNTING POLICIES

This financial report is a special purpose financial report prepared in order to satisfy the financial reporting requirements of the Associations Incorporation Act 1981 (Vic). The Board of Management has determined that the association is not a reporting entity.

The financial report has been prepared on an accruals basis and is based on historic costs and does not take into account changing money values, or except where specifically stated, current valuations of non-current assets.

a. Grants Received

Grants received have been allocated proportionately over the period covered by the grant and brought to account as income accordingly.

b. Membership Subscriptions Income

In accordance with generally accepted accounting principles for similar organisations, membership subscriptions are accounted for on a cash receipts basis.

c. Plant and Equipment

Each class of plant and equipment are included at cost less depreciation and impairment losses or at independent valuation.

The carrying amount of plant and equipment is reviewed annually by the board to ensure that it is not in excess of the recoverable amount from these assets.

The depreciable amount of all fixed assets including capitalised leasehold improvements is depreciated on a diminishing balance value over their useful lives to the Association commencing from the time the asset is held ready for use.

The depreciation rates used for each class of depreciable assets are:

| CLASS OF FIXED ASSET | DEPRECIATION RATE |
|------------------------|-------------------|
| Old Computer Equipment | 33.33% |
| New Computer Equipment | 100%* |
| Office Furniture | 20% |

* in accordance with DHS funding which now treats computers as recurrent (non-capital) funding.

Leasehold improvements are amortised over the shorter of either the unexpired period of the lease or the estimated useful lives of the improvements.

Gains and losses on disposals are determined by comparing proceeds with the carrying amount. These gains and losses are included in the income statement. When revalued assets are sold, amounts included in the revaluation relating to that asset are transferred to retained profits.

d. Income Tax

The association has been granted exemption from income tax under Section 50-15 of the Income Tax Assessment Act 1997, as amended.

e. Leases

Lease payments under operating leases, where substantially all the risks and benefits remain with the lessor, are charged as expenses in the periods in which they are incurred.

f. Goods and Services Tax (GST)

Revenues, expenses and assets are recognised net of the amount of GST, except where the amount of GST incurred is not recoverable from the Tax Office. In these circumstances, the GST is recognised as part of the cost of acquisition of the asset or as part of an item of the expense. Receivables and payables in the assets and liabilities statement are shown inclusive of GST.

| | 2011 | 2010 |
|---|----------------|----------------|
| 2. PROFIT / (LOSS) AFTER INCOME TAX | \$ | \$ |
| Profit / (Loss) after income tax has been determined after: | | |
| Crediting as income | | |
| Interest received | 598 | 493 |
| Charging as expenses: | | |
| Depreciation of plant and equipment | 48,432 | 8,485 |
| Auditors' remuneration | | |
| - Auditing the accounts | 2,500 | 2,400 |
| - Other services | 750 | 700 |
| | 357,902 | 323,723 |
| 3. CASH AND CASH EQUIVALENTS | | |
| Petty Cash | 392 | - |
| Cash at Bank | 292,139 | 256,386 |
| Emergency Relief & Distress Account | 13,662 | 16,143 |
| Interest Bearing Deposits | 30,939 | 30,936 |
| Max-I Direct Account | 20,770 | 20,258 |
| | 357,902 | 323,723 |
| 4. TRADE AND OTHER RECEIVABLES | | |
| Trade Debtors | 14,059 | 13,887 |
| Bond - Coventry Street | 45,109 | - |
| Prepayments | 1,705 | 12,107 |
| | 60,873 | 25,994 |
| 5. PLANT AND EQUIPMENT | | |
| Office Furniture at cost | 63,936 | 63,936 |
| Less Accumulated Depreciation | (62,355) | (58,498) |
| | 1,581 | 5,438 |
| Computer Equipment at cost | 43,110 | 42,921 |
| Less Accumulated Depreciation | (38,303) | (37,685) |
| | 4,807 | 5,236 |
| Relocation Assets at cost | 61,401 | - |
| Less Accumulated Depreciation | (43,957) | - |
| | 17,444 | - |
| | 23,832 | 10,674 |

| | 2011 | 2010 |
|---------------------------------------|----------------|----------------|
| 6. TRADE AND OTHER PAYABLES | \$ | \$ |
| Project Funds in Advance (Unexpended) | 190,490 | 195,397 |
| Trade Creditors | 78,696 | 24,659 |
| Accrued Expenses | 4,814 | 3,100 |
| GST Liability | 2,374 | - |
| | 276,374 | 223,156 |
| 7. PROVISIONS | | |
| Annual Leave | 44,526 | 36,457 |
| Long Service Leave | 44,335 | 42,045 |
| | 88,861 | 78,502 |
| 8. LEASE COMMITMENTS | | |
| Operating Lease Commitments | | |
| Motor Vehicle & Photocopier | | |
| Payable - minimum lease payments | | |
| - not later than 12 months | 5,521 | 5,988 |
| - between 12 months and 5 years | 12,438 | 998 |
| - greater than 5 years | - | - |
| Total Lease Liability | 17,959 | 6,986 |

The association had two operating leases, one for a motor vehicle and one for a photocopier. The photocopier lease expired on 30 June 2011 and has not yet been renewed.

Summit Auto Lease Australia Pty Ltd holds a charge over the assets of the association for the operating lease on the motor vehicle.

INDEPENDENT AUDITOR'S REPORT TO THE MEMBERS OF PEOPLE LIVING WITH HIV/AIDS VICTORIA INC.

REPORT ON THE FINANCIAL REPORT

We have audited the accompanying financial report, being a special purpose financial report of People Living With HIV/AIDS Victoria Inc. (the association) which comprises the assets and liabilities statement as at 30 June 2011 for the year then ended, the income and expenditure statement, statement of cash flows, a summary of significant accounting policies, other explanatory notes and the statement by members of the board of management.

BOARD'S RESPONSIBILITY FOR THE FINANCIAL REPORT

The board of management of the association is responsible for the preparation and fair presentation of the financial report and have determined that the accounting policies described in Note 1 to the financial statements, which form part of the financial report are consistent with the financial reporting requirements of the Associations Incorporation Act 1981 (Vic) and are appropriate to meet the needs of the members. The board of management's responsibilities also include designing, implementing and maintaining internal control relevant to the preparation and fair presentation of the financial report that is free from material misstatement, whether due to fraud or error; selecting and applying appropriate accounting policies; and making accounting estimates that are reasonable in the circumstances.

AUDITOR'S RESPONSIBILITY

Our responsibility is to express an opinion of the financial report based on our audit. No opinion is expressed as to whether the accounting policies used, as described in Note 1, are appropriate to meet the needs of the members. We conducted our audit in accordance with Australian Auditing Standards. These Auditing Standards require that we comply with relevant ethical requirements relating to audit engagements and plan and perform the audit to obtain reasonable assurance whether the financial report is free from material misstatement.

An audit involves performing procedures to obtain audit evidence about the amounts and disclosures in the financial report. The procedures selected depend on the auditor's judgment, including the assessment of the risks of material misstatement of the financial report, whether due to fraud or error. In making those risk assessments, the auditor considers internal control relevant to the entity's preparation and fair presentation of the financial report in order to design audit procedures that are appropriate in the circumstances, but not for the purpose of expressing an opinion on the effectiveness of the entity's internal control. An audit also includes evaluating the appropriateness of accounting policies used and the reasonableness of accounting estimates made by the committee of management, as well as evaluating the overall presentation of the financial report.

The financial report has been prepared for distribution to members for the purpose of fulfilling the board of management's financial reporting under the Associations Incorporation Act 1981 (Vic). We disclaim any assumption of responsibility for any reliance on this report or on the financial report to which it relates to any person other than the members, or for any purpose other than that for which it was prepared.

We believe that the audit evidence we have obtained is sufficient and appropriate to provide a basis for our audit opinion.

INDEPENDENCE

In conducting our audit, we followed applicable independence requirements of Australian professional ethical pronouncements.

QUALIFICATION

As is common for organisations of this type, it is not practicable for the associations to maintain effective systems of internal controls over donations and other fund raising activities until their initial entry in the accounting records. Accordingly, our audit in relation to donations and fund raising was limited to amounts recorded.

QUALIFIED AUDITOR'S OPINION

In our opinion, except for the effects on the financial report of the matter referred to in the qualification paragraph, the financial report of People Living With HIV/AIDS Victoria Inc. presents fairly, in all material respects the financial position of People Living With HIV/AIDS Victoria Inc. as at 30 June 2011 and of its financial performance and cash flows for the year then ended in accordance with the accounting policies described in Note 1 to the financial statements and the *Associations Incorporation Act 1981* (Vic).

Clements Dunne & Bell

CLEMENTS DUNNE & BELL PARTNERSHIP

Chartered Accountants
Melbourne

A. Wehrens.

ANDREW WEHRENS

Partner
16 September 2011

THANK YOU

Abbott Virology
Affordable Trade Services
AIDS Council of NSW
ALSO Foundation
Andie Noonan
Andrew Henshaw
Andrew Wehrens
Anglicare Victoria
Anna Georgiou
Anthony Brownrigg
Australian Federation of AIDS
Organisations
Australian Research Centre in Sex,
Health and Society
Dr Beng Eu
Bill Gianoulas
Bobby Williams
Boehringer Ingleheim
Brett Hayhoe
Bruce Johnstone
Bristol-Myers Squibb
Burnet Institute
Chris Driscoll
Clem Newton-Browne
Clements Dunne & Bell Partnership
Club 80
Coffee Club Group
Colgate
Country Awareness Network
Craig Willingham
Currency Press - The Performing
Arts Publisher
Hon Daniel Andrews
Daniel Brooks
Hon David Davis
David McCarthy
David Menadue
De Ayers
Department of Health and Ageing
DTs Hotel
Executive Edge Travel
Family Planning Victoria BBV Program
Fragile Design
Franz Kunz
Frat House
Garrett Prestage
Garry Sattell
Gilead
Grant Cook
Gregory Ladner
Hampstead Dental
HIV & Sexual Health Connect Team
Howard Stoney
Igat Hope PNG
IRS Australia Pty Ltd Instant RockStar
James May
Jamie Ivarsen
Janssen
Jenny McDonald
Jenny Whelan
Jo Pearson
Jo Watson
Joe Borg
Dr John Carnie
Jonathan Yee
Josephine Leung
Joy 94.9 FM
Kent Bangay
Kevin Brown
Laura Delaney
Laird Hotel
Louise Naughton-Smith
Mark Whearem
Dr Mark Choong
Martin Foley MLA
Matt Bottos
Matt Dixon
MCV
Media Strategies
Melbourne Queer Film Festival
Melbourne Sexual Health Centre
Mercedes-Benz Australia/Pacific
Merck Sharpe and Dohme
Michael Hall
Michael Scott
Midsumma Festival
Monash University
Multicultural Health and Support Service
(Centre for Culture, Ethnicity and Health)
National Association of People Living
with HIV/AIDS
Ography Design
Oz Showbiz Cares/Equity Fights AIDS
Pat Garner
Pathways
Paul Bangay
Paul Howard
Positive Life NSW
People Living with HIV/AIDS
South Australia
Peter Alexander
Peter Davis
Peter Holdsworth
Positive Living Centre
Positive Speakers Bureau
Positive Women Victoria
Prahran Market Clinic
Pride March
Prue Marks
Queensland Positive People
QUIT Victoria
Robert Mitchell
Rowena Doo
Royal District Nursing Service
Sarah Garner
Scott Murphy
Shane Bridges
Simon Coyle
Circuit Bar
Sönke Tremper
Southern Star
Sophie Dutertre
Stephanie Moore
Steven Fahd
Straight Arrows
TasCAHRD
The Alfred Education and Resource Centre
The Alfred HIV Services
Tobin Saunders
Total Print
Trish Thompson
Victorian AIDS Council/Gay Men's
Health Centre (VAC/GMHC)
Vic Bears
ViV Healthcare
Warren Donald

FOR 23 YEARS
COMMUNITIES
AND AFFECTED
PEOPLE WITH
HIV/AIDS
BODY FOR
VICTORIA'S PEAK
2010-2011
ANNUAL REPORT
VICTORIA
PEOPLE WITH
HIV/AIDS
PEOPLE LIVING